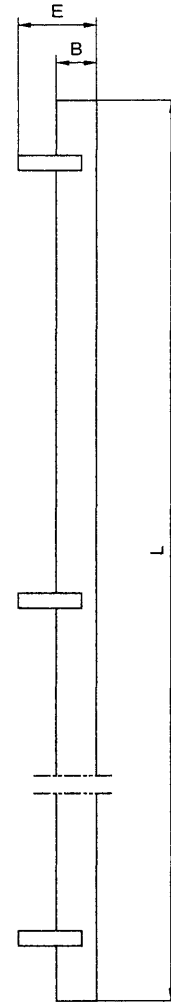
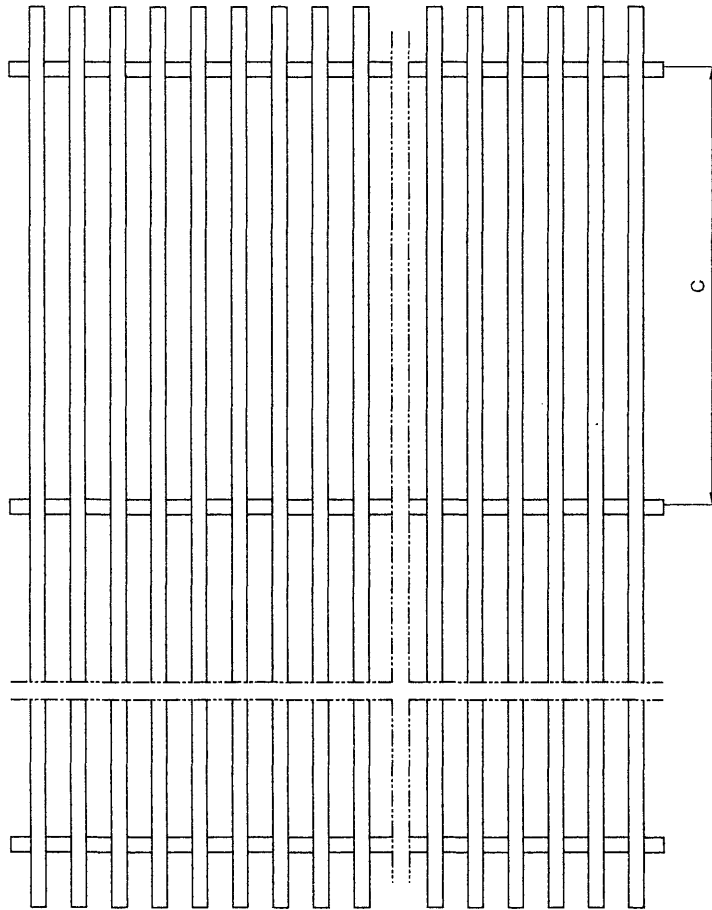
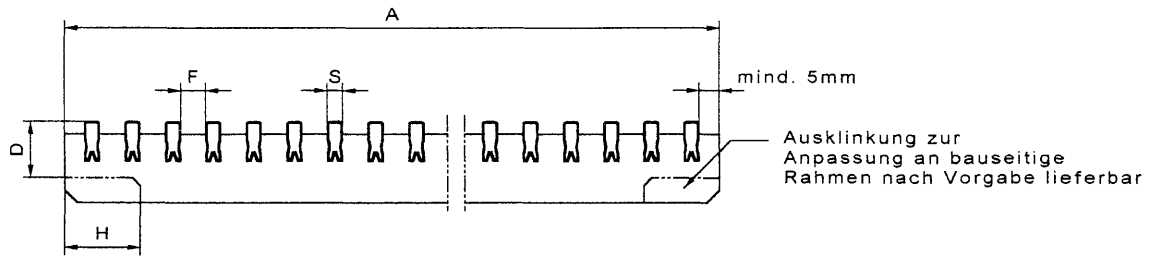


Kamm-Rost ADO KR[®]-6-V2A

ges. gesch.



| Standardmaße: | | Wunschmaße: | |
|---------------------|----|-------------|----|
| A= | mm | A= | mm |
| B= 16 | mm | B= 16 | mm |
| C= 270//45 | mm | C= | mm |
| D= ab 25 | mm | D= | mm |
| E= 25/30/35 | mm | E= | mm |
| F= 8,29/10,67/15,28 | mm | F= | mm |
| 58 / 64 / 72 % | | % | |
| H= z.B. 30 | mm | H= | mm |
| L= max. 2000 | mm | L= | mm |
| S= 6 | mm | S= 6 | mm |

Werkstoff: V2A / W.-Nr. 1,4301

Oberfläche:

- Roh
- gebeizt
- glasperlgestrahlt
- elektropoliert

| | | | | | |
|-----------------------------|---------------|--------------------------|--------|--|--|
| Maßblatt | | Bau: ADO KR-6-V2A | | ado-metall Arno Domnick Ölwerkstr. 66, D-49744 Geeste Tel.: (49)05937-8121-23 Fax.: (49)05937-7283 email: info@ado-metall.de | |
| <input type="checkbox"/> | Bestell-Hilfe | Zg.-Nr.: 4-201200-RE-01 | BV: | | |
| <input type="checkbox"/> | als Anlage | Firma: | | | |
| Freimaß | DIN 7168 sg | Tel.: | Fax.: | | |
| Urheberrecht bei ADO | | Name: | Datum: | | |